

SEIKO



The Automation-Age Watch

THE OFFICIALLY CERTIFIED CHRONOMETER

25j, self-winding, auxiliary hand winding, 98.2 ft. water tested, instant day-instant date setting bilingual English-Spanish calendar, synchronized second setting, Hi-Beat (8 beats per second- 28,800 per hour-minimize motion, position and temperature error), luminous, adjustable bracelet.



No. AN015M
Stainless steel, florentine finish dial.



No. AN016M
18K gold cap on stainless steel, florentine finish dial.



No. AN017M
Stainless steel, moonglow blue dial, "Hardlex" mar-resist prism cut crystal.

THE SEIKO SUCCESS SERIES "The Ultimate in Executive Watches"

Self-winding, auxiliary hand winding, 98.2 ft. water tested, instant day-instant date setting bilingual English-Spanish calendar, synchronized second setting, luminous.



No. BJ018M
25j, Two-tone yellow/stainless steel bezel, case and adjustable bracelet, blue dial.



No. BJ023M
25j, Stainless steel, iridescent blue dial, adjustable bracelet.



No. BJ022M
25j, Yellow top/stainless steel back, iridescent brown dial, adjustable bracelet.



No. 58147M
23j, Stainless steel,
opalescent blue dial,
adjustable bracelet.



No. 58049M
23j, Stainless steel, imperial
green dial, luminous,
adjustable mesh bracelet.



No. 58119M
23j, Stainless steel,
opalescent finish blue dial,
adjustable bracelet.



No. 58118M
23j, Yellow top/stainless
steel back, opalescent
finish gilt dial, adjustable
bracelet.



No. 58047M
23j, Stainless steel, imperial
blue dial, adjustable
bracelet.



No. 58120M
23j, Yellow top/stainless
steel back, brushed gilt
dial, adjustable bracelet.

THE SELF-WINDING CHRONOGRAPH

“Matches Quality And Performance With A High Degree of Accuracy”

17j, self-winding, chronograph (stop watch devices), stop-start push button, 30 minute recorder, instant day-instant date setting bilingual English-Spanish calendar, synchronized second setting, luminous, adjustable bracelet.



No. AH001M
Stainless steel, 229 ft. water tested, tachymeter timer, internal rotating elapsed timing ring, "Hardlex" mar-resist crystal, deep blue dial.



No. AH035M
Stainless steel, 229 ft. water tested, tachymeter timer, internal rotating elapsed timing ring, "Hardlex" mar-resist crystal, yellow dial.



No. AH003M
Stainless steel, 229 ft. water tested, internal tachymeter timer, "Hardlex" mar-resist crystal, blue dial.



No. AH072M
Yellow top/stainless steel back, 229 ft. water tested, internal tachymeter timer, "Hardlex" mar-resist crystal, gilt dial.



No. AH073M
Stainless steel, 229 ft. water tested, internal tachymeter timer, "Hardlex" mar-resist crystal, black dial.



No. AH067M
Stainless steel, 98.2 ft. water tested, gray dial.

THE SELF-WINDING CHRONOGRAPH

21j, Stainless steel, 229 ft. water tested, self-winding, auxiliary hand winding, 12 hour and 60 minute recorder, "Hardlex" mar-resist crystal, adjustable bracelet.



No. AV003M
Tachymeter timer, black dial.



No. AV017M
Black dial.

THE SEIKO ELECTRONIC SERIES

"Up-To-The-Minute Watches For The Man Who Looks To The Future"

Electronic day-date calendar, instant date setting, synchronized second setting, luminous, adjustable bracelet.



No. BP005M
Stainless steel, blue dial
with raised minute circle.



No. BP002M
Yellow top/stainless steel
back, gilt dial.



No. BP031M
Stainless steel, blue dial.



No. BP032M
Yellow top/stainless steel
back, gilt dial.

THE SEIKO SPECIALTY SERIES

"Much, Much More Than Just The Time"

BELLMATIC ALARM

17j, self-winding, separate hand winding bell alarm assures vibrating power, 98.2 ft. water tested, day-date calendar, instant date setting, luminous, adjustable bracelet.



No. AJ057M
Stainless steel, blue dial.



No. AJ058M
Yellow top/stainless steel
back, amber dial.



No. AJ048M
Yellow top/stainless steel
back, sienna brown dial.



No. AJ047M
Stainless steel, deep blue
dial with decorative bezel.



No. AJ049M
Stainless steel.

WORLD TIMER



No. 60026M
17j, Yellow top/stainless steel back, gilt dial, luminous, adjustable bracelet.

Self-winding, 98.2 ft. water tested, instant date setting calendar, synchronized second setting, 12 and 24 hour dial tells time and date around the world at a glance.

NAVIGATION TIMER



No. 60101M
17j, Stainless steel, black dial, luminous, adjustable bracelet.

Self-winding, 229 ft. water tested, instant date setting calendar, synchronized second setting, 12 and 24 hour dial tells military and conventional time simultaneously, 24 hour dial rotates to measure elapsed time.

DEEP SEA DIVER



No. 55029
17j, Stainless steel, luminous, underwater black dial, "Hardlex" mar resist crystal, pressure vented strap.

Self-winding, 492 ft. water tested, instant date setting calendar, external rotating elapsed timing bezel, synchronized second setting, lock type crown for maximum protection.

DUAL-ZONE TIMER



No. 60223M
23j, Stainless steel, blue dial, luminous, adjustable bracelet.

Self-winding, 98.2 ft. water tested, instant date setting calendar, synchronized second setting, individually set local time zone hand tells hour any place in the world continuously.

PERPETUAL CALENDAR WATCH



No. AC799M
17j, Stainless steel, blue dial, luminous, adjustable bracelet.

Self-winding, 98.2 ft. water tested, day-date calendar, instant date setting, rotating date ring can be set once a month and provide both day and date calendar for 31 days.

THE SEIKO DRESS SERIES

"Serious Accuracy With Fashion Flair"

SELF-WINDING CALENDAR

23j, self-winding, auxiliary hand winding, instant date setting calendar, Hi-Beat (8 beats per second-28,800 per hour-minimize motion, position and temperature error).



No. BY035M
Stainless steel, sun ray blue dial, adjustable mesh bracelet.



No. BY036M
Yellow top/stainless steel back, sun ray green dial, adjustable mesh bracelet.



No. BY038
Yellow top/stainless steel back, sun ray brown dial, strap.



No. BY033M
Stainless steel, sun ray black dial, adjustable mesh bracelet.



No. BY034M
Yellow top/stainless steel back, gilt dial, adjustable mesh bracelet.

SELF-WINDING DAY-DATE

23j, self-winding, instant day-instant date setting bilingual English-Spanish calendar, 98.2 ft. water tested.



No. BX016
Yellow top/stainless steel
back, black dial, strap.



No. BX013M
Stainless steel, adjustable
bracelet.



No. BX014M
Yellow top/stainless steel
back, gilt dial, two-tone
adjustable bracelet.

HAND WINDING

24j, hand winding, Hi-Beat (8 beats per second- 28,800 per hour-minimize motion, position and temperature error).



No. ZG002
Yellow top/stainless steel
back, gilt dial, strap.



No. 67030M
Yellow top/stainless steel
back, midnight blue dial,
adjustable mesh bracelet.



No. 67027M
Stainless steel, midnight
blue dial, adjustable mesh
bracelet.



No. 67028M
Yellow top/stainless steel
back, gilt dial, adjustable
mesh bracelet.

THE SEIKO SUPER SPORTS SERIES

"On Land Or Sea... Wherever The Action Is"

17j, self-winding, 229 ft. water tested, instant day-instant date setting bilingual English-Spanish calendar, synchronized second setting, "Hardlex" mar-resist crystal, concealed crown, luminous, adjustable bracelet.



No. 54099M
Stainless steel, aztec red dial, internal rotating ring.



No. 54105M
Stainless steel, blue dial



No. 54217M
Stainless steel, sienna brown dial with black decorative bezel, internal rotating ring.



No. 54219M
Stainless steel, yellow dial with green decorative bezel, internal rotating ring.



No. 54223M
Stainless steel, blue dial with decorative bezel.



No. 54225M
Stainless steel, green dial with decorative bezel.

THE SEIKO DELUXE "DX" SERIES

"The Luxurious Life Style In Watches"

17j, self-winding, 98.2 ft. water tested, instant day-instant date setting bilingual English-Spanish calendar, synchronized second setting.



No. 54293M
Stainless steel, blue dial,
luminous, adjustable
bracelet.



No. 54294M
Yellow top/stainless steel
back, wine red dial,
luminous, adjustable
two-tone bracelet.



No. 54271M
Stainless steel, black dial,
luminous, adjustable
bracelet.



No. 54272M
Yellow top/stainless steel
back, amber dial, luminous,
adjustable bracelet.



No. 54237M
Stainless steel, two-tone
forest green dial, luminous,
adjustable bracelet.



No. 54238M
Yellow top/stainless steel
back, two-tone gilt dial,
luminous, adjustable
bracelet.



No. 54273M
Stainless steel, peacock blue dial, luminous, adjustable bracelet.



No. 54274M
Yellow top/stainless steel back, two-tone forest green dial, luminous, adjustable bracelet.



No. 54306M
Yellow top/stainless steel back, iridescent green dial, luminous, "Hardlex" mar-resist crystal, adjustable bracelet.



No. 54305M
Stainless steel, royal blue dial, luminous, "Hardlex" mar-resist crystal, adjustable bracelet.



No. 54234M
Yellow top/stainless steel back, charcoal gray dial, luminous, adjustable bracelet.



No. 54233M
Stainless steel, midnight blue dial, luminous, adjustable bracelet.



No. 54148
Yellow top/stainless steel back, gilt dial, luminous, strap.



No. 54281M
Stainless steel, sienna brown dial, luminous, adjustable bracelet.



No. 54239M
Stainless steel, blue dial,
luminous, adjustable
bracelet.



No. 54240M
Yellow top/stainless steel
back, gilt dial, luminous,
adjustable bracelet.



No. 54235M
Stainless steel, two-tone
blue dial, luminous,
adjustable mesh bracelet.



No. 54236
Yellow top/stainless steel
back, two-tone brown dial,
luminous, strap.



No. 54221M
Two-tone yellow/stainless
steel bezel, case and
adjustable bracelet, blue
dial with decorative bezel,
luminous.



No. 54299M
Stainless steel, spring green
dial, luminous, "Hardlex"
mar-resist crystal,
adjustable bracelet.



No. 54300
Yellow top/stainless steel
back, sun ray brown dial,
luminous, "Hardlex"
mar-resist crystal,
brown strap.



No. 54295M
Stainless steel, sun ray
golden brown dial,
luminous, "Hardlex" mar-
resist crystal, adjustable
bracelet.



No. 54296M
Yellow top/stainless steel
back, sun ray brown dial,
luminous, "Hardlex" mar-
resist crystal, adjustable
bracelet.



No. 54143M
Stainless steel, deep blue
dial, luminous hands,
adjustable mesh bracelet.



No. 54144
Yellow top/stainless steel
back, amber dial, luminous
hands, strap.



No. 54276M
Yellow top/stainless steel
back, blue dial, luminous,
"Hardlex" mar-resist
crystal, adjustable bracelet.



No. 54091M
Stainless steel, green dial,
luminous, "Hardlex" mar-
resist crystal, adjustable
bracelet.



No. 54028M
Two-tone yellow/stainless
steel bezel, case and
adjustable bracelet,
luminous hands.



No. 54241M
Stainless steel, blue
minute-track on white dial,
luminous, adjustable
bracelet.



No. 54282M
Yellow top/stainless steel
back, blue minute-track on
gilt dial, luminous,
adjustable bracelet.



No. 54231M
Stainless steel, peacock
blue dial, luminous,
adjustable bracelet.



No. 54232
Yellow top/stainless steel
back, burgundy dial,
luminous, strap.



No. 54229M
Stainless steel, brushed
dial, luminous, adjustable
bracelet.



No. 54280
Yellow top/stainless steel
back, deep green dial,
luminous, strap.

THE SEIKO HOT LINE

"The Young Idea Is The Big Idea"

17j, self-winding, 98.2 ft. water tested, day-date calendar, instant date setting, luminous.



No. AC037M
Stainless steel, white
minute-track on blue dial,
adjustable bracelet.



No. AC038M
Yellow top/stainless steel
back, gilt minute-track on
brown dial, adjustable
bracelet.



No. AC025M
Stainless steel, burnt
umber dial, adjustable
bracelet.



No. AC026M
Yellow top/stainless steel
back, gilt dial, adjustable
bracelet.



No. AC021M
Stainless steel, green dial,
adjustable bracelet.



No. AC022M
Yellow top/stainless steel
back, wine red dial, two-
tone adjustable bracelet.



No. AC029M
Stainless steel, blue dial,
adjustable bracelet.



No. AC030M
Yellow top/stainless steel
back, sienna brown dial,
adjustable bracelet.



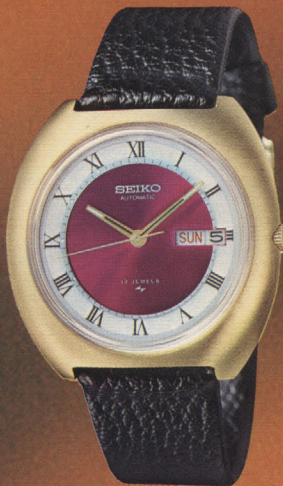
No. AC041M
Stainless steel, blue dial,
"Hardlex" mar-resist crystal,
adjustable bracelet.



No. AC042M
Yellow top/stainless steel
back, gilt dial, "Hardlex"
mar-resist crystal,
adjustable bracelet.



No. AC011M
Stainless steel, blue dial,
adjustable bracelet.



No. AC014
Yellow top/stainless steel
back, wine red dial, strap.



No. AC023M
Stainless steel, adjustable
bracelet.



No. AC024M
Yellow top/stainless steel
back, gilt dial, adjustable
bracelet.



No. AC043M
Stainless steel, blue dial,
adjustable bracelet.



No. AC044M
Yellow top/stainless steel
back, gilt dial, two-tone
adjustable bracelet.



No. AC039M
Stainless steel, aztec red
dial, "Hardlex" mar-resist
crystal, adjustable bracelet.



No. AC027M
Stainless steel, blue dial,
adjustable bracelet.



No. AC028M
Yellow top/stainless steel
back, black dial, adjustable
bracelet.



No. AC035M
Stainless steel, burgundy
dial, adjustable bracelet.



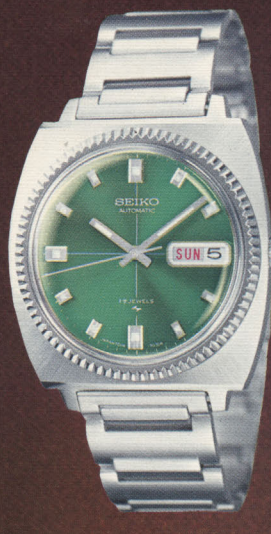
No. AC010
Yellow top/stainless steel
back, two-tone gilt dial,
strap.



No. AC032
Yellow top/stainless steel
back, sienna brown dial,
strap.



No. AC031M
Stainless steel, blue dial,
adjustable bracelet.



No. AC009M
Stainless steel, green dial,
adjustable bracelet.



No. AC003M
Stainless steel, blue dial,
adjustable bracelet.



No. AC033M
Stainless steel, black dial,
adjustable bracelet.



No. AC001M
Stainless steel, adjustable
bracelet.



No. AC002M
Yellow top/stainless steel
back, two-tone adjustable
bracelet.

17j, self-winding, 98.2 ft. water tested, instant date setting calendar, luminous.



No. AA245M
Stainless steel, blue dial,
adjustable bracelet.



No. AA244M
Yellow top/stainless steel
back, wine red dial,
adjustable bracelet.



No. AA242
Yellow top/stainless steel
back, deep green dial,
strap.



No. AA240
Yellow top/stainless steel
back, amber dial, strap.



No. AA241
Stainless steel, moonglow
blue dial, strap.



No. AA152
Yellow top/stainless steel
back, strap.



No. AA153
Stainless steel, strap.



No. AA155
Stainless steel, black dial,
strap.

HAND WINDING TRADITIONAL



No. 01163
17j, Stainless steel, blue
dial, strap.



No. 01164
17j, Yellow top/stainless
steel back, amber dial,
strap.



No. 01161M
17j, Stainless steel, 98.2 ft.
water tested, blue dial,
luminous, adjustable
bracelet.



No. 01162
17j, Yellow top/stainless
steel back, 98.2 ft. water
tested, black dial, luminous,
strap.



No. 01147
17j, Stainless steel, 98.2 ft.
water tested, luminous,
strap.

THE LADY SEIKO SELF-WINDING SERIES

"The Calendar At A Glance For The Gal On The Go"

DAY-DATE CALENDAR

17j, self-winding, auxiliary hand winding, 98.2 ft. water tested, instant day-instant date setting bilingual English-Spanish calendar, Hi-Beat (8 beats per second- 28,800 per hour-minimize motion, position and temperature error).



No. ZH073M
Stainless steel, luminous, green dial, adjustable matching bracelet.



No. ZH074M
Yellow top/stainless steel back, luminous, amber dial, adjustable matching bracelet.



No. ZS013M
Stainless steel, blue dial, adjustable mesh bracelet.



No. ZS014
Yellow top/stainless steel back, burgundy dial, strap.



No. ZS020M
Stainless steel case with yellow bezel, blue minute-track on white dial, luminous, adjustable matching bracelet.



No. ZS015M
Stainless steel, moonglow blue dial, luminous, adjustable mesh bracelet.



No. ZS006
Yellow top/stainless steel back, amber dial, luminous, strap.



No. ZS011M
Stainless steel, two-tone
forest green dial,
adjustable matching
bracelet.



No. ZS012M
Yellow top/stainless
steel back, two-tone gilt
dial, adjustable
matching bracelet.



No. ZS009M
Stainless steel, imperial
blue dial, adjustable
mesh bracelet.



No. ZS010
Yellow top/stainless
steel back, imperial blue
dial, strap.



No. ZS002
Yellow top/stainless
steel back, gilt dial,
luminous, strap.



No. ZS017M
Stainless steel, luminous,
sienna brown dial,
adjustable mesh
bracelet.



No. ZS003M
Stainless steel, luminous,
adjustable bracelet.



No. ZS004M
Yellow top/stainless
steel back, gilt dial,
luminous, adjustable
bracelet.



No. ZH071
Stainless steel, midnight
blue dial, luminous,
strap.



No. ZH072
Yellow top/stainless
steel back, luminous,
deep green dial, strap.

DATE CALENDAR

THE LADY SEIKO SELF-WINDING SERIES CONTINUED

17j, self-winding, auxiliary hand winding, 98.2 ft. water tested, instant date setting calendar, sweep center second hand, Hi-Beat (8 beats per second-28,800 per hour-minimize motion, position and temperature error).



No. ZP019M
Stainless steel, midnight blue dial, magnifying calendar window, adjustable bracelet.



No. ZP020M
Yellow top/stainless steel back, gilt dial, magnifying calendar window, two-tone adjustable bracelet.



No. ZP139M
Stainless steel, sienna brown dial, magnifying calendar window, adjustable matching bracelet.



No. ZP140M
Yellow top/stainless steel back, blue dial, magnifying calendar window, adjustable matching bracelet.



No. ZP008
Yellow top/stainless steel back, deep green dial, luminous, strap.



No. ZP141M
Stainless steel, blue dial, magnifying calendar window, adjustable matching bracelet.



No. ZP142M
Yellow top/stainless steel back, textured gilt dial, magnifying calendar window, adjustable matching bracelet.



No. ZP167M
Stainless steel, blue dial,
adjustable bracelet.



No. ZP168M
Yellow top/stainless
steel back, wine red
dial, adjustable bracelet.



No. ZP015
Stainless steel,
magnifying calendar
window, strap.



No. ZP016
Yellow top/stainless
steel back, magnifying
calendar window, strap.

THE CLASSIC FASHION SERIES

23j, self-winding, auxiliary hand winding, instant date setting calendar, Hi-Beat (8 beats per second-28,800 per hour-minimize motion, position and temperature error).



No. ZE026
Yellow top/stainless
steel back, black dial,
strap.



No. ZE028
Yellow top/stainless
steel back, fashion glow
brown dial, strap.



No. ZE029
Stainless steel, starlight
blue dial, strap.

THE LADY SEIKO DESIGNER SERIES

"Precision Accuracy Encased In Elegant Jewelry"

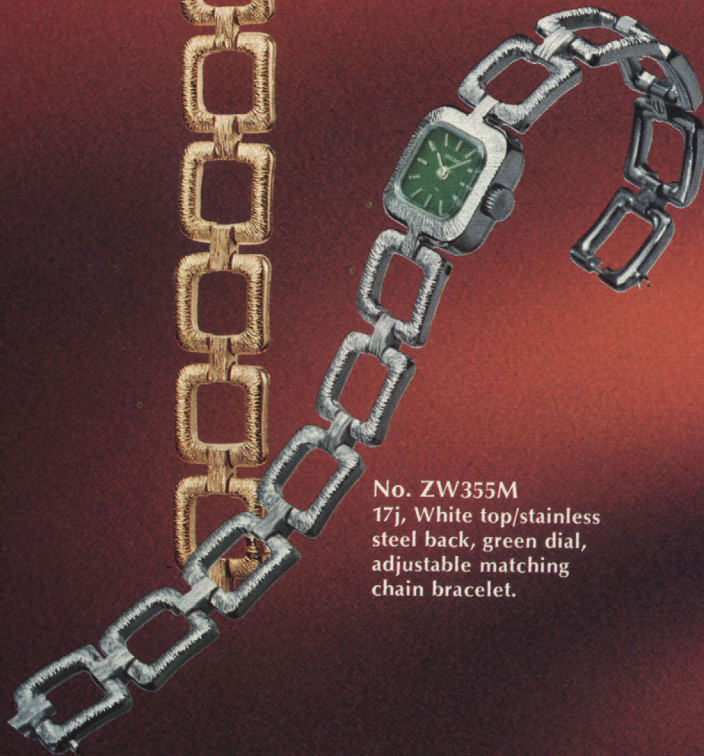
THE FASHION LINKS



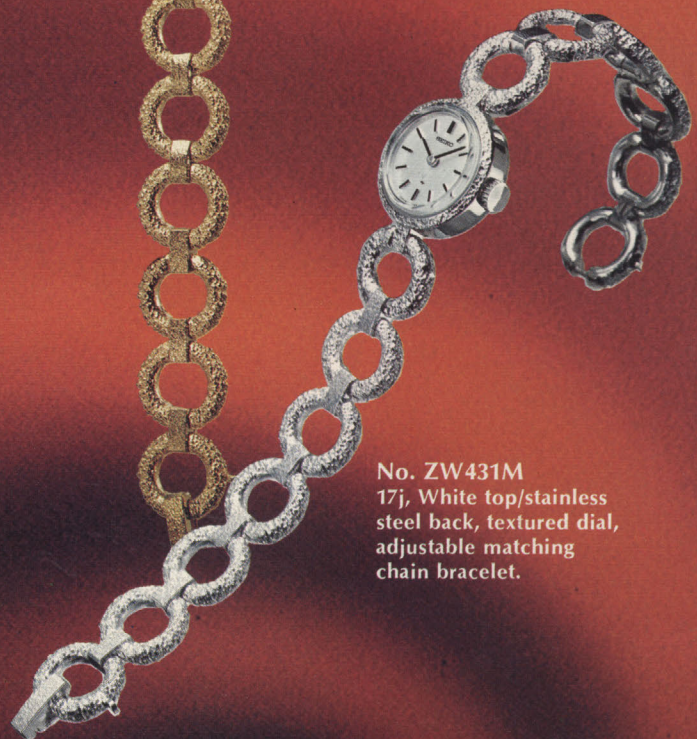
No. ZW356M
17j, Yellow top/stainless
steel back, violet blue
dial, adjustable matching
chain bracelet.



No. ZW432M
17j, Yellow top/stainless
steel back, textured gilt
dial, adjustable matching
chain bracelet.



No. ZW355M
17j, White top/stainless
steel back, green dial,
adjustable matching
chain bracelet.



No. ZW431M
17j, White top/stainless
steel back, textured dial,
adjustable matching
chain bracelet.

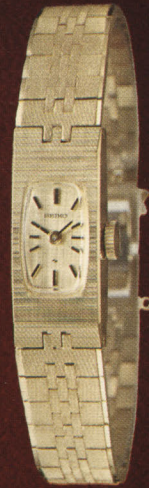
THE BAGUETTE BOUTIQUE



No. ZW358M
17j, Yellow top/stainless steel back, olive green dial, adjustable matching chain bracelet.



No. ZW357M
17j, White top/stainless steel back, blue dial, adjustable matching chain bracelet.



No. 85040M
17j, Yellow top/stainless steel back, gilt dial, adjustable matching bracelet.



No. 85039M
17j, White top/stainless steel back, adjustable matching bracelet.



No. 85059M
17j, White top/stainless steel back, satin blue dial, adjustable matching bracelet.



No. 85060M
17j, Yellow top/stainless steel back, wine red dial, adjustable matching bracelet.



No. ZW505M
17j, Stainless steel,
vertically oval moonglow
blue dial, adjustable bracelet.



No. ZW506M
17j, Yellow top/stainless
steel back, vertically
oval amber dial,
adjustable bracelet.



No. ZW503M
17j, Stainless steel,
horizontally oval blue
dial, adjustable bracelet.



No. ZW504M
17j, Yellow top/stainless
steel back, horizontally
oval black dial,
adjustable bracelet.



No. ZW430M
17j, Yellow top/stainless
steel back, burnt umber
dial, adjustable matching
bracelet.



No. ZW547M
17j, Stainless steel, deep
blue dial, adjustable
matching bracelet.



No. ZW426M
17j, Yellow top/stainless
steel back, black dial,
adjustable matching
bracelet.



No. ZW359M
17j, White top/stainless steel back, adjustable matching bracelet.



No. ZW360M
17j, Yellow top/stainless steel back, adjustable matching bracelet.



No. ZW553M
17j, White top/stainless steel back, fashion glow green dial, adjustable matching bracelet.



No. ZW554M
17j, Yellow top/stainless steel back, fashion glow brown dial, adjustable matching bracelet.



No. ZW548M
17j, Yellow top/stainless steel back, fashion glow brown dial, adjustable matching bracelet.



No. ZW552M
17j, Yellow top/stainless steel back, odyssey blue dial, adjustable matching bracelet.



No. ZW550M
17j, Yellow top/stainless steel back, wine red dial, adjustable matching bracelet.



No. ZW541M
17j, White top/stainless steel back, blue dial, adjustable matching bracelet.



No. ZW542M
17j, Yellow top/stainless steel back, sienna brown dial, adjustable matching bracelet.



No. ZW437M
17j, White top/stainless steel back, adjustable matching bracelet.



No. ZW438M
17j, Yellow top/stainless steel back, gilt dial, adjustable matching bracelet.



No. ZW543M
17j, White top/stainless steel back, fashion glow green dial, adjustable matching bracelet.



No. ZW544M
17j, Yellow top/stainless steel back, fashion glow brown dial, adjustable matching bracelet.



No. ZW123M
17j, White top/stainless steel back, midnight blue dial, adjustable matching bracelet.



No. ZW124M
17j, Yellow, gilt dial, adjustable matching bracelet.



No. ZW545M
17j, White top/stainless
steel back, starlight blue
dial, adjustable matching
bracelet.



No. ZW546M
17j, Yellow top/stainless
steel back, starlight
green dial, adjustable
matching bracelet.



No. ZW187M
17j, White top/stainless
steel back, adjustable
matching bracelet.



No. ZW188M
17j, Yellow top/stainless
steel back, gilt dial,
adjustable matching
bracelet.



No. ZW441M
17j, White top/stainless
steel back, adjustable
matching bracelet.



No. ZW442M
17j, Yellow top/stainless
steel back, gilt dial,
adjustable matching
bracelet.



No. ZW444M
17j, Yellow top/stainless
steel back, blue dial,
adjustable matching
bracelet.



No. ZW194M
17j, Yellow top/stainless steel back, textured gilt dial to coordinate with adjustable matching bracelet.



No. ZW195M
17j, White top/stainless steel back, wine red dial, adjustable matching bracelet.



No. ZW196M
17j, Yellow top/stainless steel back, wine red dial, adjustable matching bracelet.



No. ZW440M
17j, Yellow top/stainless steel back, burgundy dial, adjustable mesh bracelet.



No. ZW135M
17j, White top/stainless steel back, midnight blue dial, adjustable mesh bracelet.



No. ZW136M
17j, Yellow top/stainless steel back, burnt umber dial, adjustable mesh bracelet.



No. ZW199M
17j, Stainless steel, brushed dial, adjustable mesh bracelet.



No. ZW300M
17j, Yellow top/stainless steel back, gilt dial, adjustable mesh bracelet.



No. ZW501M
17j, Stainless steel, blue
dial, Roman numerals,
adjustable bracelet.



No. ZW502
17j, Yellow top/stainless
steel back, gilt dial,
Roman numerals, strap



No. ZW435M
17j, Two-tone yellow/
stainless steel case and
adjustable bracelet,
midnight blue dial.



No. ZW433
17j, Stainless steel,
moonglow blue dial,
strap.



No. ZW434
17j, Yellow top/stainless
steel back, amber dial,
strap.



No. ZW186
17j, Yellow top/stainless
steel back, green dial,
strap.



No. ZW125
17j, Stainless steel, blue
dial, strap.



No. ZW126
17j, Yellow top/stainless
steel back, gilt dial,
strap.

HAND WINDING CALENDAR

17j, hand winding, instant date change calendar, sweep center second hand, Hi-Beat (8 beats per second-28,800 per hour-minimize motion, position and temperature error).



No. ZM016
Yellow top/stainless
steel back, strap.



No. ZM017
Stainless steel, strap.

HAND WINDING TRADITIONAL



No. 78131
17j, Stainless steel, blue
dial, strap.



No. 78130
17j, Yellow top/stainless
steel back, gilt dial,
strap.

NURSE'S WATCH



No. 95037M
17j, Stainless steel,
sweep second hand,
large, easy-to-read
numerals on white dial,
luminous, water tested
to 98.2 ft., adjustable
bracelet.

THE SEIKO STOP WATCHES WITH OLYMPIC ACCURACY

When split-second accuracy counts, count on Seiko, official timer of major sporting events around the world, including the 1964 Olympics, the 1969 European Games, and the 1972 SAPPORO Winter Olympics.



No. 63013
1/10 second, 15 minute
accumulative recorder,
7j, all chrome plated,
with neck cord.



No. 63011
1/10 second, 15 minute
recorder, 7j, all chrome
plated, with neck cord.



No. 63014
For Basketball, 1/10
second, 15 minute
accumulative recorder,
7j, all chrome plated,
with neck cord.

THE SEIKO QUARTZ CRYSTAL CHRONOMETER

The most versatile battery-operated portable chronometer. Extreme precision within a mean daily rate of 0.2 seconds. Nonstop movement with secondary switchover cell. Fully transistorized system. Operates under all conditions anywhere, indoors or out, on ships, trains, aircraft, in office, home, factory... as a table or wall clock. (actual dimensions are 6.4" x 8.2" x 2.8")



QC-951-II

*Specifications are subject to change without notice.

SEIKO'S SERVICE FACILITIES

For service in the true Seiko tradition, five fully equipped Seiko service centers from coast to coast are at your service . . . whenever and wherever you need it.

SEIKO CENTERS

Chicago	Room 1604, 29 East Madison St. Chicago, Illinois 60602
New York	48 West 50th St. New York, New York 10020 *Mailing address for New York 640 Fifth Avenue, New York 10019
Dallas	1708 Main Street Dallas, Texas 75201
Los Angeles	3321 Wilshire Blvd. Los Angeles, Calif. 90010
Honolulu	Shop No. 1132 Ala Moana Shopping Center Honolulu, Hawaii 96814

SEIKO 

SEIKO TIME CORPORATION
640 FIFTH AVENUE, NEW YORK, N.Y. 10019

Printed in Japan